

Domestic Violence Task & Finish Group 21 November 2011

To follow documents

Agenda Item		Page No
4	INTRODUCTION TO DOMESTIC VIOLENCE Purpose Members will receive a presentation giving an overview of Domestic Violence in the county, including the scale of the issue, the funding picture and the services provided in Buckinghamshire. Contributors Susie Yapp, Safer Bucks Partnership Manager Teresa Martin, Senior Domestic Violence Coordinator, Buckinghamshire County Council Papers: PowerPoint presentation	1 - 12
5	SELF ASSESSMENT OF DOMESTIC VIOLENCE Purpose Members will receive an explanation of a self-assessment recently undertaken by Buckinghamshire County Council and of the outstanding actions from the county's current Domestic Violence and Abuse Strategy, to enable them to consider priority areas for improvement. Contributors Susie Yapp, Safer Bucks Partnership Manager Teresa Martin, Senior Domestic Violence Coordinator, Buckinghamshire County Council Papers: Summary report on self-assessment and current DVA Strategy	13 - 16



INVESTOR IN PEOPLE



6 EVIDENCE GATHERING FOR THE REVIEW

17 - 24

Purpose

Members will consider their approach to evidence gathering for the review, including agreeing an outline programme of witnesses and topics.

Contributors

Madeleine Thorpe, Policy Officer

Papers

Outline of evidence for review

Domestic Violence and Abuse

Teresa Martin



What is Domestic Abuse?



- “Any incident of threatening behaviour, violence or abuse (psychological, physical, sexual, financial or emotional) between adults who are or have been intimate partners or family members, regardless of gender or sexuality”

» Home Office



Gender and Domestic Violence



- Research has repeatedly concluded that “gender is a significant risk factor”
- Women more likely to experience DVA and also to experience severe and/or repeated, often life-threatening, incidents of violence and abuse.
- Female victims more likely to be abused post-separation than men.
- Research has shown that when women use violence/kill it is often to defend themselves or their children from a violent partner



Domestic abuse is a serious problem



Nationally in 2010/2011:

- Every year 1 million women experience at least one incident of DV – nearly 20,000 women a week
- Highest rate of repeat victimisation of any serious crime - RV accounts for 73% of all incidents of DV
- Women were the victims in 77% of incidents

Source: British crime survey 20010/11

- In 2009/10, 54% of female victims of homicide aged 16 or over had been killed by (ex) partner – 94 offences
- 5% of male victims aged over 16 killed by (ex) partner – 21 offences



How much Domestic Abuse is there in Bucks?



2010 - 11

- **6,044** incidents reported to police
- **2,678** repeats
- Children involved/in house in **1,517** of incidents
- **5** recorded DV murders over last 5 years (+ 5 attempted)
- **2** murders so far in 2011/2012



How many people are accessing services in Bucks?



- **125** women and **154** children accommodated in refuges in Bucks
- **212** women and **244** children being refused refuge due to lack of space
- **331** women worked with on outreach basis
- **193** IDVA clients
- New IDVA clients had a total of **411** children
- **178** clients seen by MARAC
- First 4 months of 2011/2011 – **89** clients
- If referrals maintained at current rate an estimated **267** cases will be seen at MARAC in 2011/2012 (50% increase)



Under-Reporting



- Using Home Office ready reckoner tool, estimated levels of VAWG based on female population of 253,900 between 16-59 and BCS prevalence rate for our region:
- **16,504** women and girls have been victim of DV in the past year (more than 2½ times police reports)
- Estimated 10% of victims high risk = **1,650**

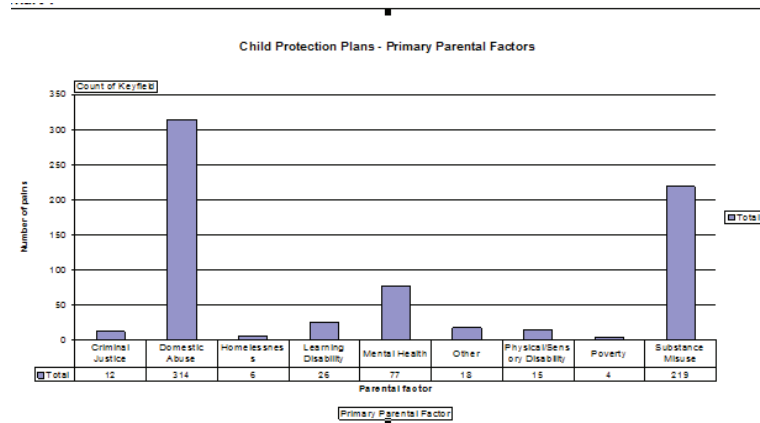


DV and Children...



- The NSPCC identified that DA was identified in **two thirds** of Child Protection Cases
- Over **75%** of cases presented at **Bucks** Children Social Care, had DV as a presenting problem





Partnership Approach

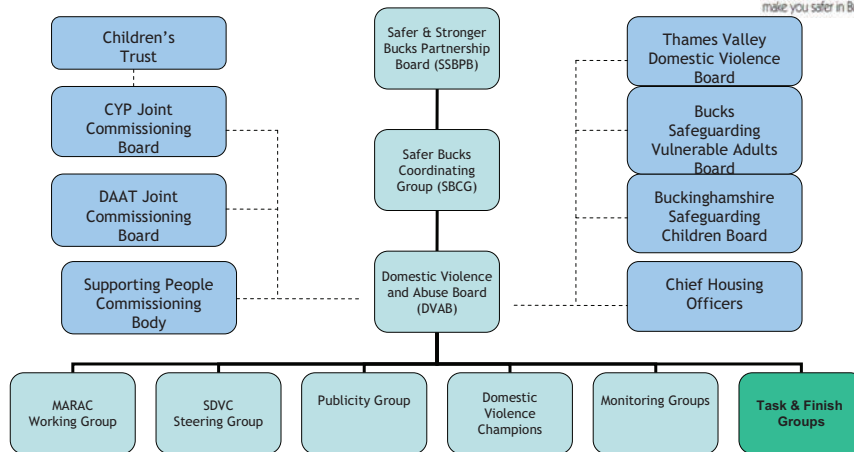
- Crime and Disorder Act 1998 places obligation on CSP and public bodies to work together to reduce violent crime, including DV
- Provides legal foundation for effective information sharing in order to protect and prosecute within DV cases
- Agencies work toward a Coordinated Community Response – all working together to reduce the risk and increase the safety of victims



- DV one of the top 3 priorities for the SSBPB
- No Excuse for Domestic Abuse strategy vision – *To promote a zero tolerance and co-ordinated response to people at risk of DVA in Buckinghamshire, to seek to ensure that those who are affected are identified, supported, protected and empowered*



Governance



- SSBPB – Multi-agency board with responsibility for strategic leadership of CS activity in Bucks and identify partnership priorities
- Evaluate performance and hold each other to account
- Annual Joint Strategic Assessment – Used to identify priorities and commit resources



Roles of Statutory Agencies

- Police – Enforcement
- CPS - Prosecution
- Health – GPs, A&E, Health Visitors, Midwives
- Districts - Housing
- BCC – Safeguarding Children and Adults, Education, Community Safety
- Probation – Working with offenders and victims of violent/sexual offences



What support do we have in Buckinghamshire?



- Women's Aid – refuge and outreach
- Victim Support
- RELATE
- National Help lines Independent Domestic Violence Advocate
- Freedom Programme
- Multi Agency Risk Assessment Conference
- Fresh Start programme
- YP Freedom Programme
- Children Support in Women's Aid
- Child Therapy Groups
- Expect Respect Programme
- Media & Awareness Raising
- Training for professionals
- DV Directory of Services



Funding



C&YP

2011/12 - £114,450

2012/12 - TBC

Supporting People

2011/12 - £167,000 to Women's Aid for Refuge (to be reduced by 15%)

Districts

Contribute to Women's Aid services



IDVA Funding



S&S Partnership Funding for IDVA

2011/12 - £60,000

2012/13 - £75,000 (tbc)

2013/14 – Unknown as will be managed by PCC

MoJ IDVA Funding

2011/12 - £20,000

2012/13 - £20,000 (tbc)

2013/14 – None as 3 year funding expired

DV Partnership Budget

2011/12 – Balance of partnership money which has contributed to IDVA and Fresh Start programme

2012/13 – Historical funding sources have now expired



Future...new commissioning approach?



- Proposal to pool resources from C&YP, CS, A&FWB
- Enable efficiency savings and a co-ordinated approach to monitoring and evaluation
- Reduce burden on providers
- Effectively lead to commissioning in partnership a smaller number of projects with higher value contracts



How would it work?



- DVA Strategy 2012-2015 is currently being developed and would feed into the commissioning approach
- Single commissioning strategy led jointly by commissioners in Adult, YP and CS teams
- D&CVSG would inform and drive future DVA commissioning
- D&CVSG responsible for agreeing and monitoring spend



Any Questions?



Contacts Details



- Teresa Martin
- tmartin@buckscc.gov.uk
- 01296 383701



Report to Domestic Violence Task and Finish Group

Title:	Self Assessment of Domestic Violence
Date:	Monday 21 st November 2011
Author:	Teresa Martin - Senior Community Safety Officer
Contact officer:	Sue Burke – Domestic and Sexual Violence Coordinator
Report signed off by Cabinet Member and Strategic Director:	Martin Phillip and Neil Gibson
Electoral divisions affected:	[Electoral divisions]

**** All Agenda Items should include a summary report, using this template. The maximum length should be no more than 4 pages.****
**** Please seek guidance from the scrutiny team staff on what papers are needed. For example, detailed information may be provided in appendices.****
**** See the 'Guidelines for OSCC Meeting Preparation' for more information. ****

Purpose of Agenda Item

This report is to give an overview to work that has been done in relation to the areas that need development which have been identified through the current DV Strategy action plan and the Audit Commission Self Assessment Tool.

Background

The Audit Commission produced a Domestic Abuse Partnership: Area Self-Assessment tool to help areas think about the strengths and weaknesses of the Domestic Abuse Partnership. There are three themes and four aspects of work:

Themes:

- A joint partnership approach
- A victim centred approach including and understanding of diversity
- Effective use of funds, understanding costs, benefits and outcomes

Aspects:

- Prevention
- Early Identification
- Advice and Support
- Dealing with perpetrators

Completion of the self-assessment identified that Buckinghamshire is doing well in the majority of areas, but also identified areas for improvement within the partnership. It was a useful exercise in that it confirmed areas we were aware needed further development and



INVESTOR IN PEOPLE

also where the focus needed to move to in the new DV strategy which is currently being developed for introduction in the Spring of 2012.

The current DV strategy for 2009-2012 is coming to an end in March 2012 and from this strategy an action plan was developed. The current strategy was broad and had a huge amount to achieve, due to the amount of developments required from a national and local steer and catering for local need. Overall the strategy has been successful and the DV partnership landscape is very different now to the one in 2009. Partly due to the breadth and complexity of the strategy and also how most action plans pan out over a period of time, a small number of areas of this strategy have not been completed; though all have been worked on - these correlate to the areas identified in the self-assessment. Partnership agencies are experiencing various challenges within their work environments currently resulting in some areas where progress had been made being reduced due to external factors beyond our control.

Much has been achieved within this strategy period, including increased provision of service and a raised profile both with professionals and the public alike.

Summary

The areas that were identified in needing development in Buckinghamshire were:

- Develop ways of learning from victims/survivors to help with strategy and service improvements
Currently we gain views on an adhoc basis from both Aylesbury and Wycombe Women's Aid clients on any upcoming projects or consultations, they also provide a collective voice for those who experience DV on the Domestic and Community Violence Board and local fora to ensure that the 'victims voice' is heard. This needs to be more formalised with specific focus groups of victims/survivors consulted on strategy, services and proposals, so that their experience and views can be incorporated in their development.
- Strategies and available information do not reflect the diversity of local need
There have been steps in this area, but these have not been developed further, in part, due to the reduction in the number of community groups that support BME, LGBT and traveller/gypsy communities. Wycombe Women's Aid provide outreach to Asian women, following an identification of need and data and analysis has started to look at who is accessing what services and where the gaps of service provision are, but more work needs to be done.
- Services need to better reflect local geography
Within Buckinghamshire 35% of people live in rural areas, some of these areas can be isolated and for people that are already isolated (DV victims), this can exacerbate their situation further. Although all our services cover the whole county and support agencies travel to convenient and safe place for victims, the hub of services are in the urban areas of the county so therefore are not as easily to accessible for those living in our rural communities. The Women's Institute (WI), commissioned a report called: "Violence Against Women in Rural and Urban Areas", this compared the experience of urban and rural victims. The WI report discovered that both urban and rural victims experience DV in the same way, but they are more likely to access health services for support. Work needs to build on what has been done already in ensuring that those living in rural areas find it as easy as possible to access support services.

- Develop long-term goals as a focus for all prevention work
Prevention work is one of the most successful and achievable ways in reducing the incidence of DV in the long term. Much work has been done with schools, but due to the number and diversity it has not been an easy task. The current situation is adhoc training for schools when requested and good provision of support for those schools when they are confronted with one their pupils who are experiencing DV at home. There is however, less work in schools in relation to promoting healthy relationships, either through PHSE lessons or in a whole school approach. This current experience will be challenged further by many schools seeking academy status. This needs a concerted coordinated approach in order for schools to embrace this work.
- Identify spend on prevention as a first step to assessing the cost-effectiveness of alternative activities
The commissioning arrangements within the county have grown organically with 'pots' of money becoming available and sort to seek to provide services to meet the need locally. Currently there is work being down within BCC to have a more coordinated approach to funding and tendering of services for victims, perpetrators and children.
- The partnership should ensure that housing options fit the diversity of local victims including across gender
Within Buckinghamshire, we have two refuges one in Aylesbury and the other in Wycombe provided by Women's Aid. These provide high quality, expert support for those women who are fleeing their abusive partner. This provision is needed without question, but there may not be enough choice of different sorts of accommodation for varying groups of people. Men, for example very rarely require refuge provision but they may want quick access to safe accommodation especially if their situation has made them homeless.

Resource implications

Currently across partners a total of around £500K is given to the provision of DV services and support. The partnership is committed to keeping these services as DV has been identified as one of the top three priorities due to the vulnerability of those who experience it. The current funding is not guaranteed for the future and going forward as more pressures are put on partnership budgets, this could impact negatively on any funding for DV services.

Next Steps

As the current strategy draws to a close, sights are being set on the new strategy and its development. In January there is going to be a stakeholder meeting that reviews the current strategy, its successes and challenges, but then turn towards the future and decide what the partnership needs to focus on. The development will be informed by the current action plan, the self-assessment tool and the Bucks Safeguarding Children Board audit which is also taking place at this time. It will also be informed by the development in the commissioning arrangements within BCC in relation to DV.

Report to Domestic Violence Task and Finish Group

Outline of Evidence for Domestic Violence Review

Date: 21 November 2011

Contact: Madeleine Thorpe (01296 382140; mcthorpe@buckscc.gov.uk)

Purpose of agenda item

This item is for members of the Task and Finish Group to consider and agree their priorities for evidence gathering for the review, based on information presented in previous items (Introduction to Domestic Violence, and Self Assessment of Domestic Violence).

Scope of the review

The key issues for consideration, as identified in the scope of the review (Appendix 1), can be summarised as:

- How effectively agencies work together
- Arrangements for commissioning services
- The role of a Big Society approach in Domestic Violence
- Services for different groups
- Honour based violence
- Relationships education for young people
- The role of practitioners and the public in identifying Domestic Violence
- Work with whole families, survivors and perpetrators

Summary

The following tables set out potential evidence sources for the different aspects of the Domestic Violence topic that the review could explore.

Members are asked to consider the suggested evidence sources and identify their priorities for the review.

>> Performance of services in the county

Witness / evidence source	Key areas to cover / detail
Susie Yapp, Safer Bucks Partnership Manager	How is DV performance managed? How is training delivered to ensure agencies work effectively together?
Police (Chris Innes / Rebecca Mears)	How accurately is DV measured/recorded? How different types of incidents are recorded (e.g. honour based violence, abuse in teenage relationships)
Denise / Liz, Aylesbury/Wycombe Women's Aid	Monitoring requirements for commissioned services. Data confidence for DV in the county.
Officers in Community	Commissioning for DV services within BCC – this

Safety, CYP, AFW	is currently spread between Community Safety, CYP and AFW.
MARAC (Multi-agency Risk Assessment Conference) - Aylesbury 8 th December - Wycombe – 25 th January	The MARAC is a meeting of local agencies to discuss and agree action in high risk Domestic Violence cases. Up to two members could attend a MARAC and report back to the rest of the Group on how agencies work together in high risk cases. Members will be required to sign a confidentiality agreement to attend the MARAC.
MARAC Quality Assurance reports (written evidence)	Understanding the strengths and weaknesses of the county's two MARACs.

>> Development of the 2012-15 Domestic Violence Strategy

Witness / evidence source	Key areas to cover / detail
Martin Phillips, Cabinet Members for Community Engagement	Portfolio lead for Domestic Violence
Val Letheren / Mike Appleyard / Patricia Birchley, Cabinet Members	Particular areas of DV which fall in their portfolios
Domestic and Community Violence Strategy Group	Partner views on how agencies work together (Councils, TVP, Health, VCS etc)
Joint partner workshop, 25 th January, run by BCC Community Safety to inform new strategy	A specific session could be run within the workshop to gather partner views to feed into the review, for example on community-led solutions.
Angie Sarchet, Cohesion and Equalities Manager	Overview of working with under-represented groups
Rebecca Carley, Locality Services Manager (and/or area Localities and Communities Managers)	Community based solutions [links into evidence relevant for DV services in rural communities]

>> Involvement of Victims

Witness / evidence source	Key areas to cover / detail
Visits to Women's Refuge(s)	Understanding victims' experiences and the practical support refuges provide. A visit could be arranged for a small group of members.
Focus Group	Focus group of victims / service users in Buckinghamshire
Mumsnet / other forum	Use of online forum to gather views about online support for DV victims

>> Honour Based Violence / Forced Marriage

Witness / evidence source	Key areas to cover / detail
Angelie, Asian Women's Worker, Wycombe Women's Aid	How are victims supported to seek help?
Karma Nirvana, national charity	How can victims be empowered within their communities?
Al-Aman Family Safety Project, led by London-based charity Domestic Violence Intervention Charity (DVIP)	Working with mosques/cultural centres and training community leaders to identify and reduce tolerance of DV; working with men and women in Arabic speaking communities.
Newham Asian Women's Project	Providing training towards employment as a route to help women live independently

>> Rural communities (with low access to DV services)

Witness / evidence source	Key areas to cover / detail
Melanie McCarry, University of Bristol, has completed a range of research into DV including rural communities	Extent and characteristics of DV in rural communities
Health representative – rural GP / nurse / health visitor	Views about rural DV services – links to others in local communities etc
Parish Councils and LAF members	Is there an appetite for training local community representatives in recognising and offering the appropriate initial support for those affected by DV?
Surrey libraries	Campaign to provide DV support through libraries How useful can online support be for those affected by DV?
Mumsnet	Discussion topic on usefulness of online resources and support for DV

>> Prevention of Domestic Violence – working with CYP

Witness / evidence source	Key areas to cover / detail
Steve Edgar, School Improvement, BCC	Extent of support that can be provided to schools for healthy relationships education
Linda Ayres / Simon Brown, CYP Commissioning, BCC	Prevention and support for teenagers in abusive relationships.
DV Worker, Youth Service, BCC	Services delivered around healthy relationships in Buckinghamshire
Bracknell Forest Youth Offending Service – Stepping Up Project	Evaluation of the Stepping Up Project – a six week course for young men who have seen inappropriate behaviours modelled / are in abusive relationships, to promote positive behaviour.

Research carried out by NSPCC, Barnardo's and Sugar magazine - TBC	Extent of abuse in teenage relationships – importance of understanding the gendered nature and power relations that underly much DV.
--	--

Further topic areas:

The above evidence programme is achievable in the time available for the review (Appendix 2). Further topic areas may emerge through evidence gathering, which could be the focus of more in depth study commissioned by the OSCC, if needed. These areas could include:

- support for victims with No Recourse for Public Funds
- support for victims in relation to prosecution
- substance misuse
- domestic violence affecting groups such as Lesbian, Gay, Bisexual and Transgender; men as victims of DV; disabled victims; Gypsy, Roma and Traveller groups

Resource Implications

- Officer, partner and contributor time
- Costs for external speakers (TBC) and evidence gathering

Next steps

>> Are members happy to agree the above evidence programme, and are there any suggestions for additional evidence that could be considered for inclusion?

>> Which members would like to attend a MARAC? Up to two per date (on 25th January this would be instead of attending the partner workshop)

>> Which members would like to visit a refuge? Dates TBC

Appendix 1

Task and Finish scope on Domestic Violence

Membership	<p>Lesley Clarke (Chairman) Other Members to be confirmed. Co-optees: One voluntary sector representative; one member invited from each District Council</p>
Officer contact	<p>Madeleine Thorpe (01296 382140)</p>
Background to the review and key areas to be addressed	<p>The Countywide Community Safety Partnership (Safer & Stronger Board) is the partnership body with responsibility for co-ordinating crime and disorder reduction across the county. It has set one of its top three priorities as tackling domestic violence. The OSCC has statutory responsibility for scrutinising the work of the crime & disorder partnership.</p> <p>The aim of the review is to evaluate the effectiveness of the Countywide Domestic Violence Strategy and its implementation with a view to identifying service gaps, making recommendations to strengthen co-ordination of services; ensure a joined-up commissioning approach; and identify any potential improvements to services and clarify resource needs.</p> <p>The review will cover all aspects of the Strategy; with a particular focus on co-ordination; prevention and early intervention. The review will build upon a self-assessment (audit commission toolkit) be completed by the BCC Community Safety Team.</p> <p>The key issues to address are:</p> <ul style="list-style-type: none"> • How effectively are services and agencies working together to tackle domestic violence? • How effective are the commissioning arrangements to maximise value for money and ensure a joined-up approach across the county? • To what extent does the commissioning approach support a Big Society, community self-help approach? • To what extent do agencies work together to address the needs of the whole family, including children? • Are the current support services offered meeting the needs of survivors of domestic violence, and if not what are the service gaps? • Are services meeting the needs of different groups, including Black and Minority Ethnic (BME) women; men; and Lesbian, Gay, Bisexual and Transgender (LGBT), and are there any specific issues that need to be addressed? • How is honour-based violence being addressed within services/agencies and the local community and what further work needs to be done? • What is being done to challenge the cultural acceptance of domestic violence? • What “relationships education” do children receive in Buckinghamshire

	<p>schools to educate about domestic violence and how can we ensure that this is ongoing in the new schools governance climate?</p> <ul style="list-style-type: none"> • To what extent is BCC working with young people to reduce the risk of current and future violence relationships? • To what extent is domestic violence identified & reported by practitioners and the public and what more could be done? • How effective is work to reduce repeat offending, and work with perpetrators? • What are the risks and opportunities in regard to changes in future funding arrangements?
Anticipated outcomes	<ul style="list-style-type: none"> • A good understanding of the range of impacts domestic violence has on people's lives • Identification of issues and need in Bucks and the opportunities and risks associated with gaps/projects at risk of closing • A report with recommendations to the County Council's Cabinet and Safer and Stronger Partnership Board to make improvements, including on the co-ordination and commissioning of services. • Specific actions identified to be included in the next Countywide Domestic Violence Strategy as a result of the scrutiny review. • A higher profile and ownership of domestic violence work across services within the Council and partners. • An insight into the experiences of service users.
Link to Council Corporate Plan priority	<p><i>Priority – Helping the most vulnerable</i></p> <ul style="list-style-type: none"> • We will support the most vulnerable to live safely, with dignity and respect
Methodology	<ul style="list-style-type: none"> • Self-assessment exercise • Written evidence • Oral evidence (Dec-Jan) • Visits to Women's Refuges • Interviews • Use of existing survey data and analysis • Commissioning qualitative research (if needed) • Calling an End to Violence Against Women and Girls Strategy 2010
Public Involvement	Tbc
Key background papers	<ul style="list-style-type: none"> • Safer Bucks Plan 2011/12 • Countywide Domestic Violence Strategy 2009-2012 • Thames Valley Domestic Violence Strategy
Evidence to be provided by:	<ul style="list-style-type: none"> • Cabinet Member for Community Engagement • Cabinet Member for Children's Services • Community Safety Team • Domestic and Community Violence Board (facilitated discussion at meeting) • Children & Young People (Safeguarding) • Adult Social Care • Safeguarding in Education

	<ul style="list-style-type: none"> • Bucks Safeguarding Children’s Board/Adults Board • Youth Offending Service • Thames Valley Police • Women’s Aid (Wycombe; Aylesbury Vale) • Victim Support • RELATE • Fresh Start • Harmoni for Health • MK Act • Probation Service • PCT/GP Collaboratives • Oxford Health NHS Foundation Trust • Crown Prosecution Service and Her Majesty’s Courts Service (HMCS) • Other Local Authorities or VCS projects identified as beacons of good practice • Housing Associations/District Councils
Equalities Impact	<ul style="list-style-type: none"> • The review will include a focus on the extent to which domestic violence services are accessible and tailored to meet the needs of specific groups such as BME Women; men; and LGBT.
Outline timetable	A detailed timetable will be agreed by the Task & Finish Group. It is expected that a first meeting will take place in November.
Reporting mechanism	<ul style="list-style-type: none"> • OSCC – in the new Year • Cabinet – Spring 2012

Appendix 2

Dates for evidence meetings

Five further dates for evidence gathering meetings have been set:

- Wednesday 7th December, 1pm - 3pm, Mezz 2, New County Offices, Aylesbury
- Wednesday 18th January, 1.30pm - 4pm, Mezz 1, New County Offices, Aylesbury
- Thursday 19th January, 10am - 12.30pm, Mezz 1, New County Offices, Aylesbury
- Wednesday 25th January, 10am - 1pm, Green Park, Aston Clinton. (This will be to take part in a joint partner workshop on developing the county's 2012-15 Domestic Violence Strategy. The exact timings may change.)
- Thursday 26th January, 2pm - 4.30pm, Mezz 3, New County Offices, Aylesbury

A wash up session will be held on 6th February for members to review the key findings from the evidence and consider their recommendations.